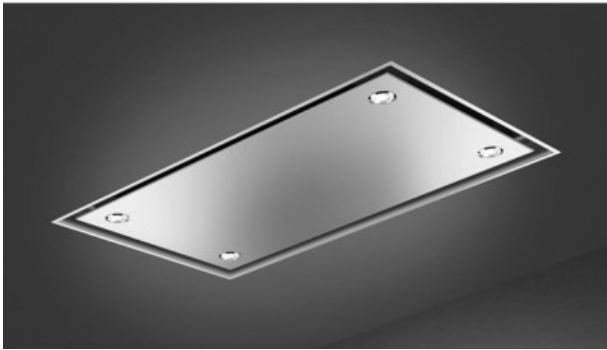


KSCB120XE

Hood, Ceiling hood, Universale, Stainless steel, 120 cm, A+



TYPE

Product family: Hood • Hood Type: Ceiling hood • Hood width: 120 cm • Extraction: Extraction • Electronic control: Yes • Perimeter extraction: Yes • EAN code: 8017709283896

AESTHETICS

Colour: Stainless steel • Finishing: Satin • Aesthetics: Universale • Design: Ceiling • Material: Stainless steel • Type of steel: Brushed

PROGRAMME / FUNCTIONS

No. of speeds: 3 • Intensive speed: Yes

CONTROLS

Control setting: Electronic buttons

TECHNICAL FEATURES

No. of lights: 4 • Light type: LED • Light Power: 1 W • Light color temperature scale (°K): 3000 °K • Free outlet maximum capacity: 820 m³/h • Motor power: 275 W • No. of filters: 2 • Anti-grease filters: Stainless steel • Minimum distance from GAS hob: 650 mm • Vent outlet: 150 mm • Minimum distance from ELECTRIC hob: 500 mm • Non return valve: Yes

PERFORMANCE / ENERGY LABEL

Energy efficiency class (EEC): A+ • Fluid Dynamic Efficiency class (FDEC): A • Grease Filtering Efficiency Class (GFEC): F • Lighting Efficiency Class (LEC): A • Annual Efficiency Consumption (AEC_{hood}): 43 kWh/a • Fluid Dynamic Efficiency (FDE): 36.7 • Lighting Efficiency (LE): 33.4 lux/W • Grease Filtering Efficiency (GFE): 49.8 % • Air flow at minimum speed (Q_{min}): 293 m³/h • Air flow at maximum speed (Q_{max}): 655 m³/h • Air flow at boost speed (Q_{boost}): 808 m³/h • Airborne acoustical A-weighted sound Power Emission at minimum speed (SPE_{min}): 50 dB(A) • Airborne acoustical A-weighted sound Power Emission at maximum speed (SPE_{max}): 66 dB(A) • Airborne acoustical A-weighted sound power emission at boost speed (SPE_{boost}): 70 dB(A) • Power consumption in stand-by mode (P_s): 0.40 W • Time increase factor (F): 0.7 • Energy Efficiency Index: 41.6 • Measured air flow rate at best efficiency point (Q_{bep}): 418 m³/h • Measured air pressure at best efficiency point (P_{bep}): 489 Pa • Measured electric power input at best efficiency point (W_{bep}): 155 W • Nominal Power consumption of the light system (WL): 4 W • Average illumination of the light on the cooking surface (E_{middle}): 147 lux • Sound power level at highest setting (L_{wa}): 66 dB(A)

ELECTRICAL CONNECTION

Electrical connection rating: 279 W • Voltage: 220-240 V • Frequency (Hz): 50-60 Hz • Power supply cable length: 1500 mm

SPEED 1

Extraction rate IEC 61591: 293 m³/h • Noise level IEC 60704-2-13: 51 dB(A) • Power: 166 W

SPEED 2

Extraction rate IEC 61591: 420 m³/h • Noise level IEC 60704-2-13: 58 dB(A) • Power: 208 W

SPEED 3

Extraction rate IEC 61591: 655 m³/h • Noise level IEC 60704-2-13: 67 dB(A) • Power: 254 W

INTENSIVE SPEED

Extraction rate (IEC 61591): 808 m³/h • Noise level IEC 60704-2-13: 71 dB(A) • Power: 276 W

LOGISTIC INFORMATION

Dimensions of the product (mm): 295x1200x700 • Width: 1200 mm • Depth (mm): 700 mm • Product Height (mm): 295 mm • Net weight (kg): 27.000 kg

ACCESSORIES INCLUDED

Remote control: Yes

OPTIONAL

FLT6: Charcoal filter, HoodsKITALLFC: Charcoal filter, Hoods

